



The Gunnison and Greater Sage Grouse populations have been mapped for decades, but only one detailed mile-by-mile native vegetation megatranssect of their habitat has ever been done, in 1997 by Craig Carlton Dremann of the Reveg Edge, Redwood City, California.

142-0 - Juniper, solid CW/R
 143-0 - Juniper, solid CW/R
 144-0 - Juniper, solid CW/R
 145-0 - Juniper, solid CW/R
 146-0 - Juniper, solid CW/R
 147-0 - Juniper, solid CW/R
 148-0 - Juniper, solid CW/R
 149-0 - Juniper, solid CW/R
 Canyon starts
 150-0

Exit 26, Joseph/Monroe, big
 Oryzopsis at exit
 156-0
 157-0 - Ag fields + CCS
 158-0 - Ag fields + CCS
 159-0 - Ag fields + CCS
 PM 29
 160-0 - Ag fields + CCS
 161-0 - Ag fields + CCS
 162-0 - Ag fields + CCS

168-0 - Ag fields + CCS
 169-0 - Ag fields + CCS
 170-0 - Ag fields + CCS
 171-0 - Ag fields + CCS
 172-0 - Ag fields + CCS
 173-0 - Ag fields + CCS
 174-0 - Ag fields + CCS
 175-0 - Ag fields + CCS
 176-0 - Red Cliffs
 177-0 - Ag fields + CCS

182-0 - Ag fields + CCS/CW
 183-0 - Ag fields + CCS/CW
 184-0 - Ag fields + CCS/CW
 185-0 - Ag fields + CCS/CW
 186-0- Desert
Salina, UT



187-1 - Oryzopsis
 188-0
 189-0

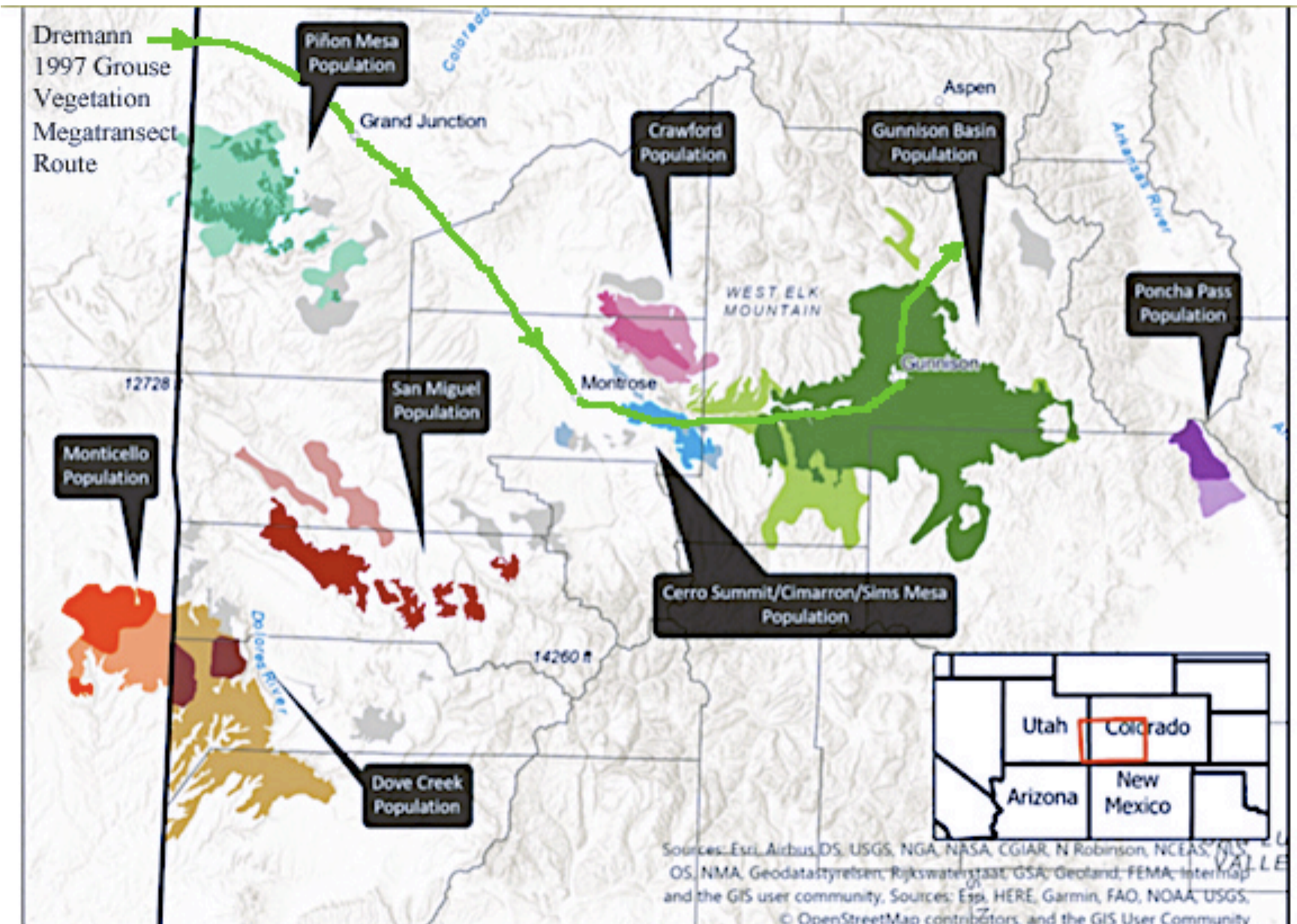
191-0
 192-0 - Juniper
 193-0 - Juniper
 194-0 - Juniper

196-0 - Juniper
 197-0 - Juniper
 198-0 - Juniper
 199-0 - Juniper

201-1 - Oryzopsis
 202-0 - Juniper
 203-1 - Oryzopsis
 204-1 - Oryzopsis

This grouse vegetation megatranssect runs for 3,381 miles and recorded what native plants and what exotic plants were growing at each post-mile from California to South Dakota and back.

This megatranssect provides on the ground conditions, that existed in 1997



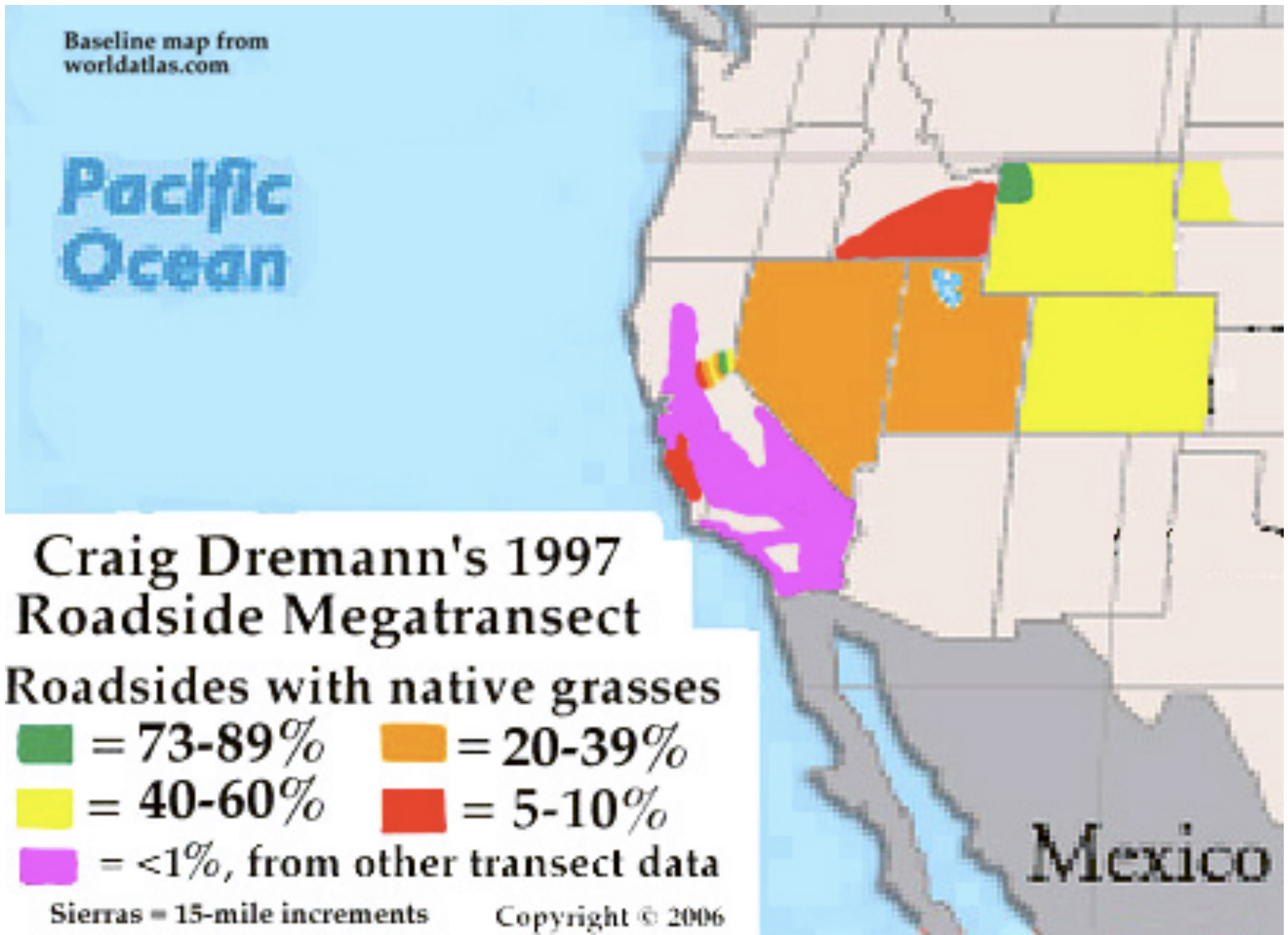
A Megatransect can provide valuable perspectives previously unavailable.

- 1.) Absence or presence of a native grass and native forb understory**, lists what species were present at each mile in 1997.
- 2.) Do Sage Grouse require a minimum threshold native cover** to survive, and has that cover changed since 1997 as a cause for their decline.
- 3.) Has the spread of exotics** such as cheatgrass helped accelerate the decline, with the 1997 locations noted mile-by-mile for the various exotics encountered.
- 4.) Are intentionally sown exotics** like Smooth Brome and Crested wheatgrass making major contributions in the decline of Sage Grouse, to permanent destroy the chick food plants and make those exotic-sown areas unfit for their survival.

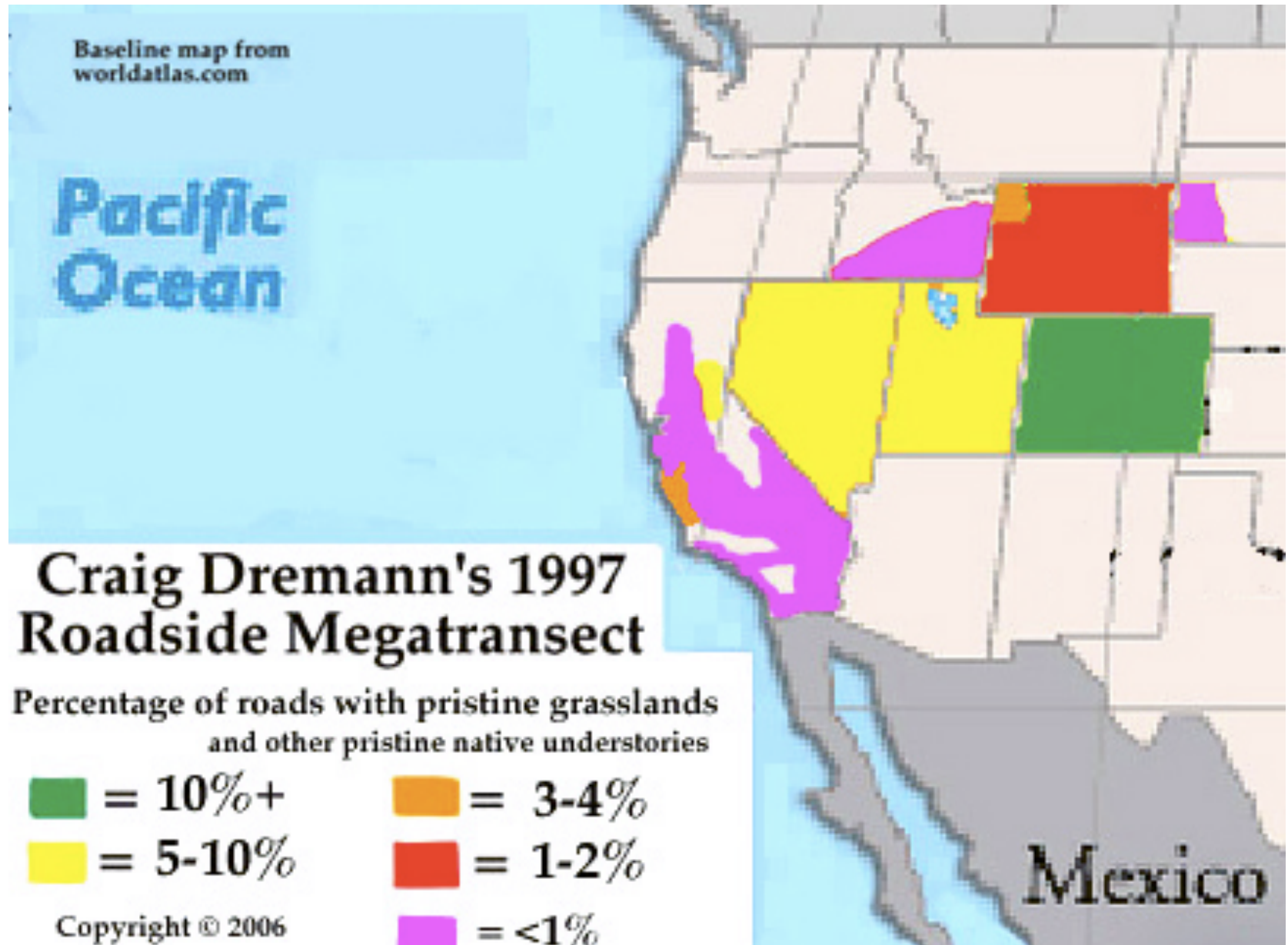
MILES SURVEYED

California	109
Nevada to Ely	334
Nevada, Ely to Utah	68
Utah	274
Colorado	542
Wyoming	605
South Dakota	56
Wyoming	605
Idaho	283
Nevada back from ID	448
<u>California</u>	<u>57</u>
TOTAL	3,381

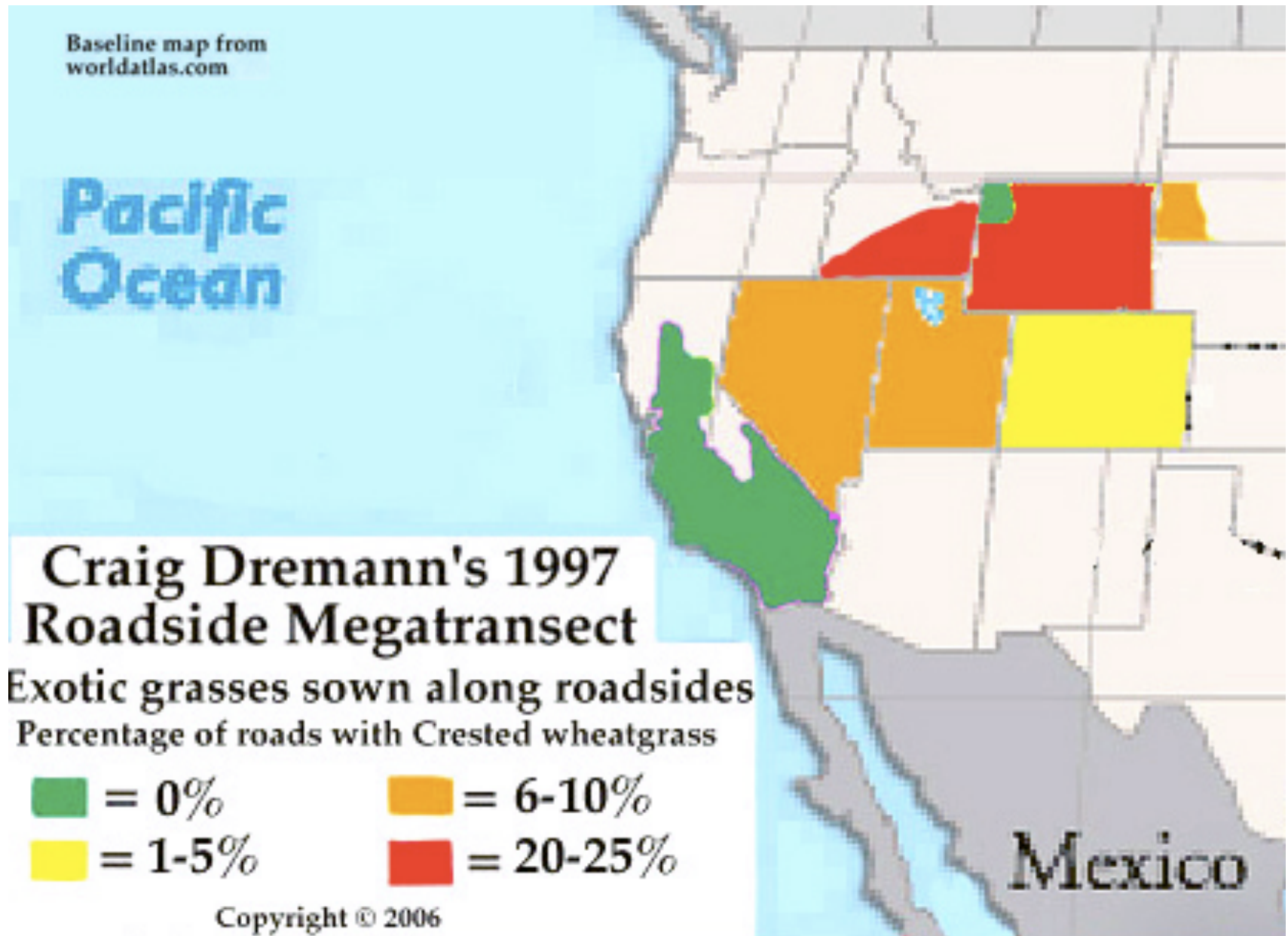
Percentage of roadsides with native grass cover.



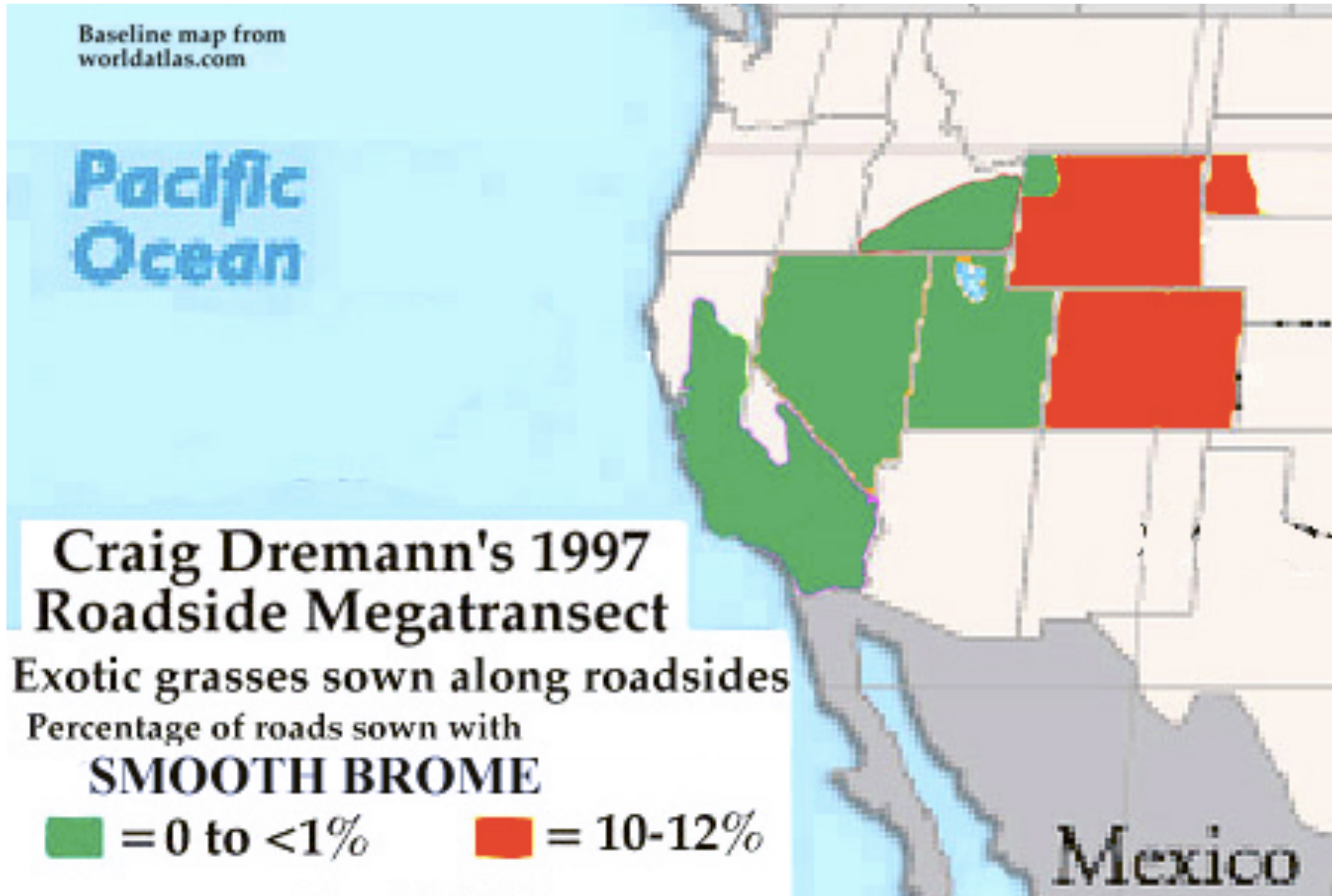
Percentage of roadsides with pristine native grasses and understories.



Percentage of roadsides sown with Crested Wheatgrass.



Percentage of roadside sown in Smooth Brome.



1997 GREAT BASIN NATIVE GRASS MEGATRANSECT

Copyright © 2022 by Craig Carlton Dremann, The Reveg Edge, P.O. Box 361, Redwood City, CA 94064
North America's Sagebrush/Grassland Ecosystem--the mile-by-mile record of the severely cow and sheep-chewed damages
in 1997, what species were seen, plus the locations of the few remaining pristine grasslands and their extents.

INDEX:		
Page 1 - Index		
2. Index	27. CO Denver	55. NV Tonapah
3. Index	28. CO	56. NV, CA
4. Map - California to Nevada	29. CO Map	57. NV, CA Maps
5. California to Nevada survey	30. WY, CO Fort Collins	58. CA Bodie
6. CA. Donner summit to NV	31. WY Map	59. NV Carson City to CA border
7. NV Reno I-80 to Jct. US 50	32. WY Platte County	60. Field Notes - CA, NV
8. NV Fallon to Jct. Hwy 361	33. WY North Platte River	61. Field Notes - CA, NV
9. NV Austin	34. WY Map	62. Field Notes - NV
10. NV Eureka	35. WY	63. Field Notes - NV, CO
11. NV Rob Pass	36. WY, SO DAK	64. Field Notes - CO, WY
12. NV Connors Pass	37. WY Moorcroft	65. Field Notes - CO
13. NV Sacram Pass	38. WY Buffalo	66. Field Notes - CO
14. NV Map	39. WY Buffalo	67. Field Notes - CO, WY
15. UT	40. WY	68. Field Notes - CO
16. UT Beaver	41. WY Shell	69. Field Notes - SD
17. UT Jct. I-70	42. WY Cody	70. Field Notes - WY
18. UT Salina	43. WY Yellowstone Nat Park	71. Field Notes - ID
19. UT I-70	44. WY, ID Maps	72. Field Notes - ID
20. UT Eagle Canyon	45. ID Idaho Falls	73. Field Notes - NV
21. CO	46. ID Soda Springs	74. Field Notes - NV
22. CO Grand Junction	47. ID Snake River	75. Field Notes - NV
23. CO Montrose	48. ID Twin Falls	76. Field Notes - CA
24. CO Gunnison	49. ID Twin Falls	77-79 - List of Photos
25. CO Cottonwood Pass	50. ID Maps	
26. CO Map	51. NV Jackpot	
	52. NV Ely	
	53. NV	
	54. NV Maps	

Photos and text Copyright © 2022 by Craig Dremann, The Reveg Edge,
Box 361, Redwood City, CA 94064 –650-325-7333- craig@ecoseeds.com
This megatransect is available for a licensing fee, call or email for price.